

spacecraft.

Company Profile

Profile

A collaboration of creators and technicians...we craft ideas that work

Our focus is to create a story with people who interact with our designs. For this reason we don't work to a single style or visual signature, but with a creative process. The Spacecraft team is diverse and therefore dexterous enough to see things from different viewpoints, and that's when the magic happens.

Design is more than decoration, it's deeper, so we are interested in the brand and the ideology of our clients. Our design is not just about cosmetics and aesthetics, it's concept driven with substance.

We don't see ourselves just as consultants but partners. We form cooperative relationships with our clients through listening. By working in collaboration with our clients and industry experts we can facilitate an outcome that is well resolved, financially viable, environmentally sensitive and meets our clients' needs. In short, we produce ideas that work.

We are a multidisciplinary design practice and turn our hand to hospitality, retail, and residential interior design and fit outs. We have great relationships with our shop-fitters and builders so we can manage a full turn-key service from a chat over a coffee to the completion of your project.

Key Clients

Accor Hotels
Best Western Hotels and Resorts
Tradewinds Developments
Westfields
Lend Lease
AMP



Principals



Cameron Crispin

Cameron loves to create places that are organic, tactile, communicative and experience driven, believing that the things that work personally or humanly are the things that also work commercially.

He began his career as a furniture designer and maker, giving him a firm understanding of materials and construction techniques. This developed into a strong architectural and design sensibility as his focus moved to Hospitality, Retail and Residential spaces. This transition has informed his forest and the trees approach, resulting in a body of work that carefully balances structural elements with playful detail. Cameron builds trust with our clients by enthusiastic dialogue and an open ear. He enjoys collaborating with consultants, architects and craftsmen – desiring to learn and always willing to share his knowledge and creativity.

Cameron's spare time is spent enjoying life's simple pleasures and time with his wife and daughters; using his property as an experimental tool for refining and exploring sustainable design, growing his own food and contemplating life around an open fire.



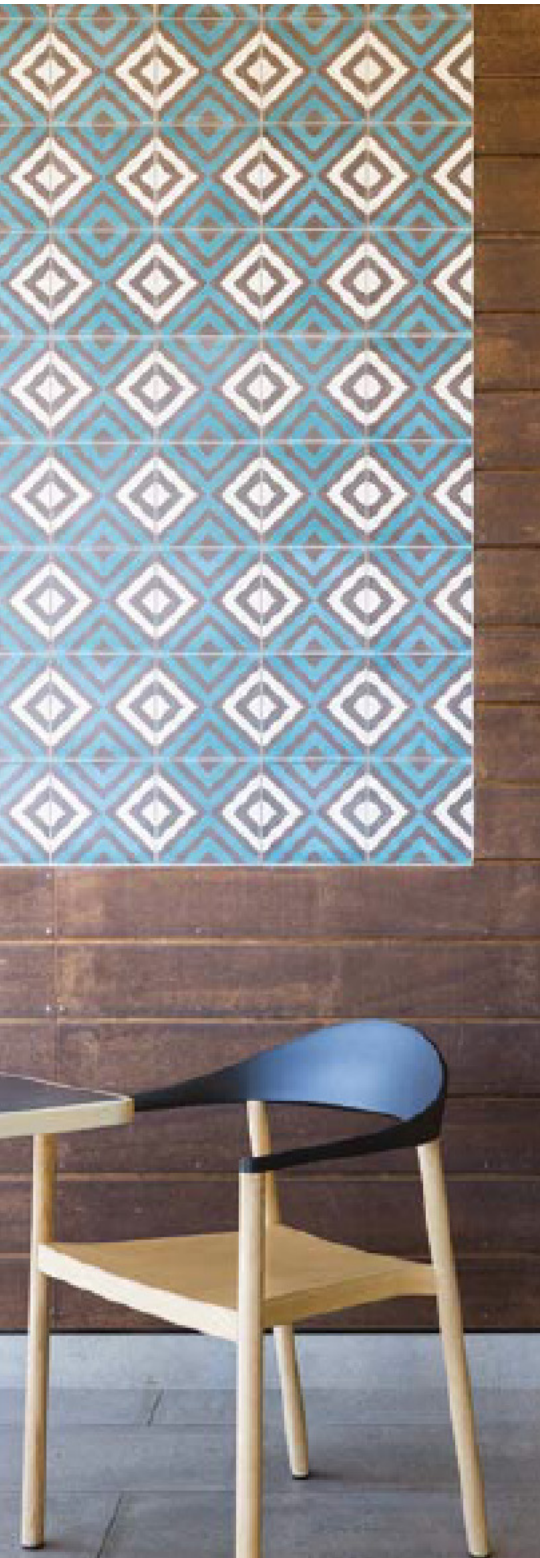
Cassandra Sasso

Cassandra's designs push boundaries. Design needs to move you, inspire you, and challenge the way you think and interact with space. She understands client requirements, and looks at all projects as a holistic creative process that should exceed both client and consumer expectations.

She began her career in the family architectural business which allowed her to gain a solid background in conceptual work and construction knowledge whilst expressing sound contemporary ideas. Completing her studies in Australia and Europe, she has continued to travel extensively with her career, working for leading international design firms and corporate clientele. She has spent a significant time working in Asia, and has a diverse portfolio to include Hospitality, Retail, Heritage and high-end Residential. Most recently, she headed the Design Program at Best Western Hotels and Resorts Australasia.

Cassandra has a hands-on approach to every project, and sees it as an opportunity to collaborate and learn from the best the industry has to offer. Her solid design background, combined with her awareness of corporate needs, ensures every project is current and competitive.

Services



Concept Design

- Building Design
- Spatial Planning
- Landscape & Garden Design
- Exterior Facades, Lighting and Signage
- Graphic Design
- Branding
- 3D Renders



Design Documentation

- Design Development
- Specification & Scheduling
- Documentation for Tender & Construction
- Project Administration



PROCUREMENT

- Décor, Art and Styling
- Furniture & Equipment
- Fixtures & Finishes
- Window treatments
- Objects & Lighting



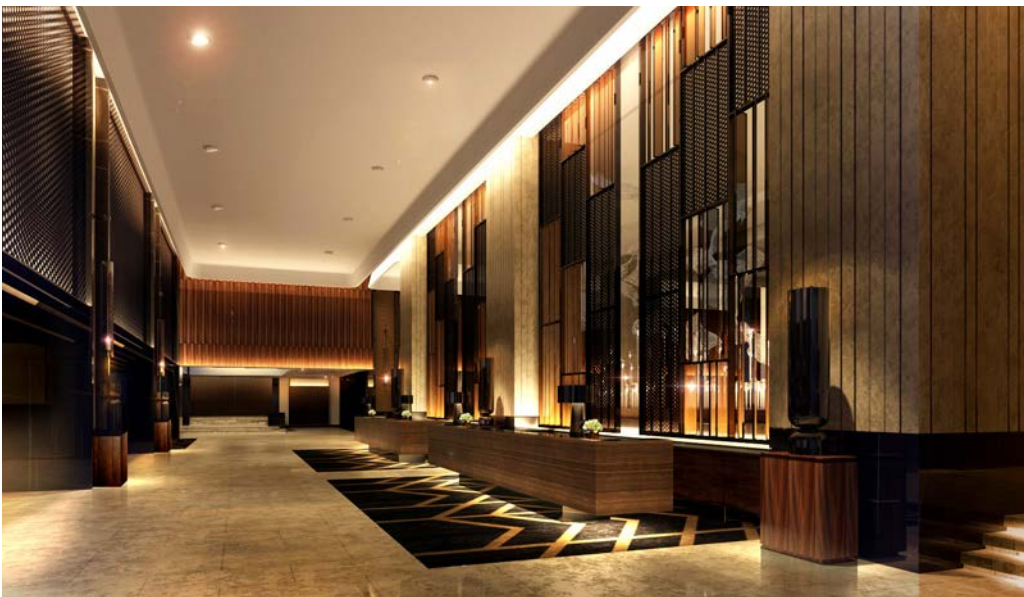
PROJECT MANAGEMENT

- Feasibility Studies
- Planning & Building Permits
- Project Management & scheduling
- Consultant Coordination
- Site Inspections
- Builder Liaison

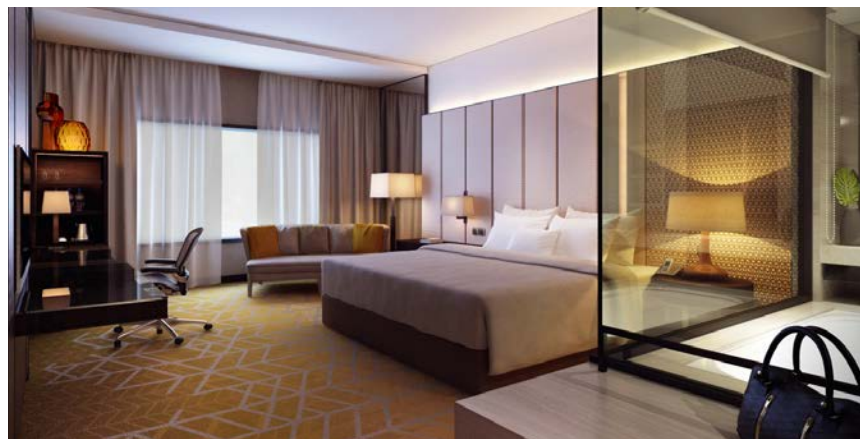
Works



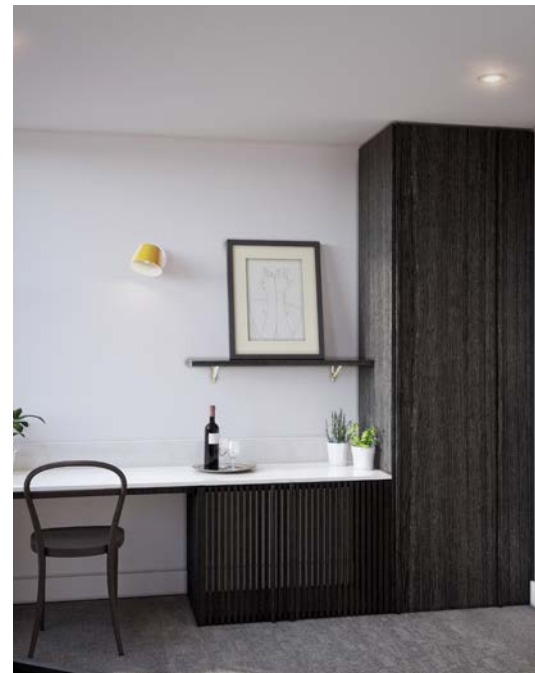
Best Western PLUS Oceanside
81 Rooms, 4.5* Hotel, Sunshine Coast



Istana Hotel
500 Rooms, 5* Hotel, Kuala Lumpur



*some projects were completed under direction of previous employment



Mercury 'The Lodge'
81 Rooms, 4.5* Hotel, Ballarat



Roundabout Restaurant
60 seats, Wagga Wagga



Miss Frank
70 seats, Camberwell



Urban Providore
40 seats, Toorak



Burger Edge
55 seats, Docklands

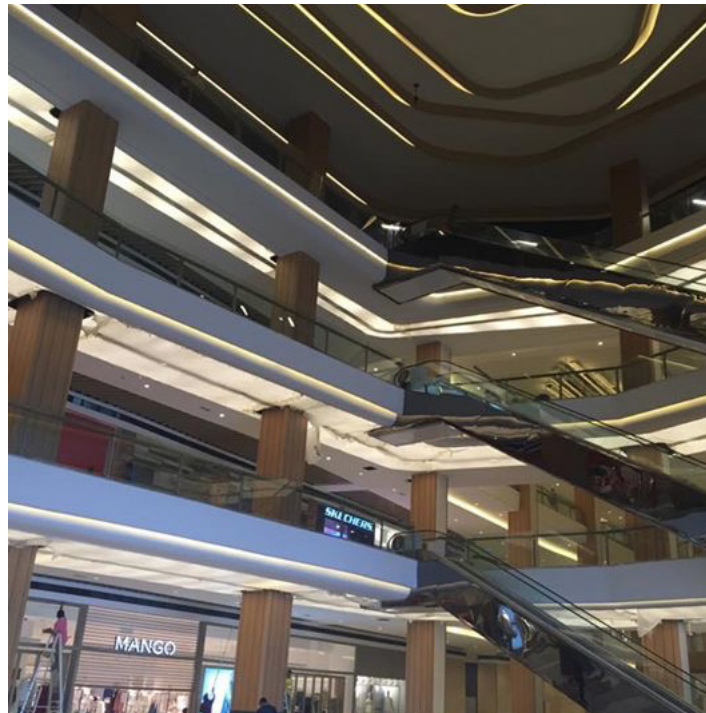


The Vale
Residential Show Unit, Kuala Lumpur



Cacao Lab
Concept Store, Melbourne





Atria Shopping Gallery
Retail Centre, Kuala Lumpur



Ocean Keys
Food Precinct, Perth



Cassandra Sasso
Principal and Interior Designer
+61 439 903 187
cass@spacecraftdesign.com.au

Cameron Crispin
Principal and Interior Designer
+61 437 908 285
cameron@spacecraftdesign.com.au

spacecraft.

SYDNEY | MELBOURNE
spacecraftdesign.com.au